

COMPREHENSIVE ROUTING AND SCHEDULING FOR FIXED ROUTE TRANSIT

BUILD RIDER TRUST AND CRUSH YOUR ON-TIME PERFORMANCE (OTP) GOALS WITH FX/BLOCKBUSTER.

TripSpark's advanced scheduling software for fixed route transit systems, FX/BlockBuster, contains comprehensive functionality that automates time-consuming tasks and creates many efficiencies in the major stages of the scheduling process. The core features of FX/Blockbuster include Route Definition, Trip Building, Blocking, Rostering and Runcutting.

ROUTE DEFINITION

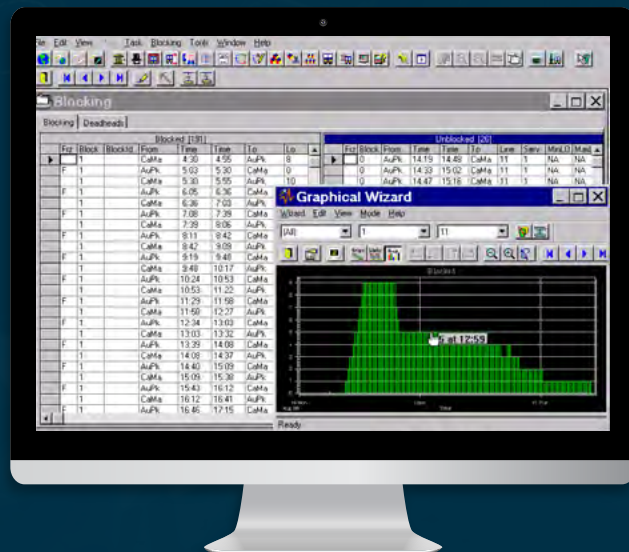
- Build and modify routes by defining paths, patterns, nodes, relief points, and bus stops
- Geocode timing points, stops, yards/garages, etc., using the system map features
- Define variations to routes (i.e., patterns) to reflect passenger demand or traffic flow along routing at different times of day
- Calculate distances between nodes and stops, enabling run times to be extracted with greater ease
- Plan additional downstream routes

TRIP BUILDING

- Build trips using pre-defined running time intervals and run times
- Analyze the effects that shifting a trip would have on the headway
- Manually insert variations to run times while adjusting schedules
- Build optimized schedules by specifying variables such as pattern, specific node, vehicle type, from and to times, frequency, and number of trips

BLOCKING

- Assign vehicles through manual, automatic, or heuristic methods, and verify the integrity of the blocks
- Use operation-defined costing parameters and values to assign vehicles and optimize the cost efficiency of the blocks
- Assign vehicle blocks to garages through a manual or automated process, minimizing deadhead distances and garage limitations
- Calculate deadhead times and distances and identify optimal deadhead routes
- Graphically view a block profile graph (histogram) that displays the vehicle requirements by time of day



ROSTERING

- Create any type of weekly work assignments required by the agency (i.e. four-day, five-day, six-day, rotating work weeks)
- Create rosters for regular and relief operators, and special rosters for part-time operators
- Adjust costing parameters to build the most cost-effective rosters
- View the costing summary to determine if a roster violates union or agency rules
- Compare multiple roster scenarios for cost efficiency, adherence to rules, etc.

RUNCUTTING

- Advanced Runcutting logic is proven to deliver the most cost-effective runcuts in the industry
- Develop scenarios within a workbench that enables you to alter parameters without affecting any other scheduler's work or parameter settings
- Evaluate allowance, rule, and policy changes, and see the cost impact of each
- Runcutting offers a powerful tool during the Union Negotiation process, where rule changes and alternatives can be quickly processed

KEY BENEFITS TO YOUR AGENCY



INTEGRATION

Integrate FX seamlessly with software for planning, operations management, customer service, and demand response scheduling.



INCREASE EFFICIENCY

Increase the productivity of your scheduling department with automated scheduling and other intuitive, time-saving features.



RETURN ON INVESTMENT

Maximize your return on investment with scalable, extensible software that will support your organization's needs for the long term.



CONTROL COST

Reduce operating costs by blocking vehicles and deploying operators. Reduce deadhead trips and maximize resources with better interlining – minimizing vehicle use.



BETTER SERVICE

Provide better service to the public through intelligent, well-planned routing and accurate, efficient schedules.

REPORTS

A wide variety of FX/Blockbuster standard reports are available. Configure to formats that best suit particular tasks and organizations or create ad hoc reports using the Report Wizard. Reports can be developed using SQL query, Crystal reports, Visual Basic and Visual C++, and ASCII (plain) text. Create any or all the following FX/Blockbuster reports:

- Run guide
- Driver's paddle
- Block paddle
- Block summary
- Graphical run analysis
- Line summary
- Turn list
- Vehicle pull in and pull out
- System statistics
- Headway sheet
- Roster report