

PACE PARTNERSHIPS

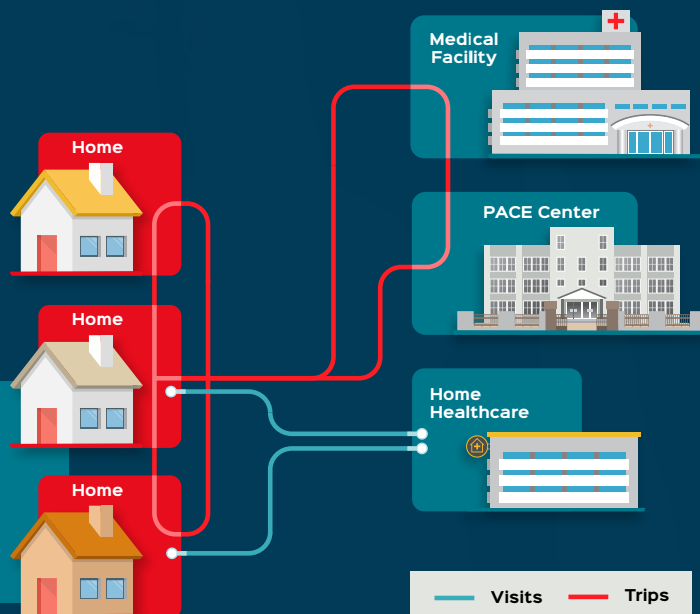
TripSpark understands a major goal for the Program for All-Inclusive Care for the Elderly (PACE) is to help seniors meet their healthcare needs in their community, instead of going to a long-term care facility. TripSpark's non-emergency medical transportation (NEMT) software is designed to help achieve this goal by ensuring no visits are missed, transportation is on time, and coordination of services is improved. Our software is part of the entire process; whether it's family members or nurses, personal caregivers, etc. booking one off or subscription trips via TripSpark's Passenger Portal for the participant, calling in to the call center to manage the trips or the scheduling and assignment of home healthcare provider visits, you can manage this all from TripSpark's core software, NovusMED. One integrated system handles the needs of both participants and providers in real time.

Coordinating schedules between home care, transportation, and off-site appointments gives you the opportunity to streamline operations and improve participant care.

DESIGNED WITH PACE PARTNERS IN MIND

- **Efficient** – Automated vehicle routing creates the most efficient use of your vehicles and resources while balancing participant experience goals
- **Multi-purpose** – Tracking participant trips and vehicles gives insight into real-time locations
- **Configurable** – Adaptable workflows allow you to apply your center's operational rules
- **Highly flexible** – Adjustable screen layouts and user-defined fields provide a system that's tailored to your center's needs
- **Scalable** – From startup to multi-center operation, your system is designed to grow as your needs change
- **HIPAA compliance** – Security levels allow you to control user access to information

NovusMed offers two types of scheduling: trips (to and from the PACE day center and to medically necessary appointments) and home healthcare visits (visits from a service professional to the participant's home).



FEATURES AND BENEFITS

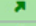
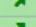
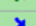


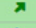
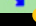

Better Scheduling for Your Organization

Optimized Routing for Transportation Vehicles and Caregivers' Schedules

With automated scheduling tools, your coordinators can create scheduling solutions in a fraction of the time required to schedule services manually

NURSE NANCY SMITH R.N. - 0 4						Activity	Status	EstTime	Participant Name	Address	Distance	Length of Visit
NURSE NANCY SMITH R.N. - 0 4							S	7:00a		HOME, CALIFORNIA ST SAN FRANCISCO CA 94104	0.000mi	0
							S	8:05a	MRS. SARA ALVAREZ	100 MAIN ST SAN FRANCISCO CA 94401	19.536mi	10
							S	11:00a	MRS. ELSIE BARNES	135 West St. Sausalito CA 94965	27.732mi	10
							S	12:00p	MRS. PATTIE GREENE	384 Bradford St San Francisco CA 94110	11.572mi	30
							S	2:00p	MR. NICHOLAS GARZA	2760 Balboa St San Francisco CA 94121	7.059mi	25
							S	2:35p		HOME, CALIFORNIA ST SAN FRANCISCO CA 94104	5.624mi	0

Home healthcare visits performed by a nurse. Unique icons indicate non-transportation related activities.

	S	MRS. ERNESTINE BOONE	333 POST ST SAN FRANCISCO CA 94108	9.042mi
	S	MR. RODNEY BERG	1600 DIVISADERO ST SAN FRANCISCO CA 94115	2.049mi
	S	MRS. DOLORES BLAKE	822 GEARY ST SAN FRANCISCO CA 94109	1.381mi
	S	MRS. ERNESTINE BOONE	69 Bosshard Ct Alameda CA 94501	8.243mi
	S	MR. RODNEY BERG	1770 San Antonio Ave Alameda CA 94501	1.795mi
	S	MRS. DOLORES BLAKE	3030 Jackson St Alameda CA 94501	1.885mi
	S	MR. GUADALUPE COLLIER	375 Clifton St Oakland CA 94618	6.617mi
	S	MR. GUADALUPE COLLIER	3200 CALIFORNIA ST SAN FRANCISCO CA 94118	14.104mi

Scheduled route performed by a PACE driver. Note shared passenger pickup and drop-offs.

Provider Preferences and Exclusions

Improve participant experience and set up templates to allow participants to get picked up at the same time every day, and travel with the same driver and friends. Conversely, provider exclusions can also be recorded and applied.

Management for Coordinated Services

Participant Information

The system can pull in participant information from electronic health record systems, including general information, multiple addresses, contacts, and eligibility.

Vehicle and Driver Information

TripSpark stores vehicle and driver information, such as names, addresses, contacts, credentials, licensing, insurance, and

trainings status. This information is used for scheduling and to ensure only staff with current documentation are assigned to trips and home health services.

Service Booking

Participant information including past trip history and known pick-up and service locations can be looked up and selected from drop-down fields.

Track and Analyze Your Operations

In-Field Data Collection

Mobile devices, such as android tablets and smart phones, can provide real-time communication and data collection for transportation and home healthcare providers. Staff can download schedules, electronically collect times, verify visits, and log GPS locations - all from their mobile devices. They can also add pre-defined comments to the trip or visit record.

Financial Tracking

TripSpark includes a financial tracking capability for centers that perform transportation internally or contract with third parties to provide transportation. With pre-set service rates, reimbursements can be automatically calculated based on time, mileage or other defined criteria.

Geographic Service Areas

The service area of each facility can be easily defined using TripSpark's built-in mapping tools. Multiple individual service areas may be defined and assigned to drivers and home health providers to ensure the most accurate routing and work assignments.

Multi-Facility Operations

The system can be configured for a single facility or to accommodate multiple facilities within the same organization. Financial tracking tools allow for cost allocation and activity reporting for each facility.

Reporting and Analysis Tools

Data generated by the system is stored in a Microsoft SQL database providing a wide range of reporting and analysis options.

MOVING » « TOGETHER

TripSpark Technologies is a transportation technology company focused on helping NEMT and healthcare transportation providers increase service and access to transportation, drive revenue, and overcome operational challenges. We are not just a vendor—we are your long-term strategic partner, offering the latest technologies and providing exceptional support.

 www.tripspark.com |  info@tripspark.com

©TripSpark Technologies, its subsidiaries and affiliates. All rights reserved. 2021
Any trademarks or registered trademarks mentioned herein are the property of their respective owners.

