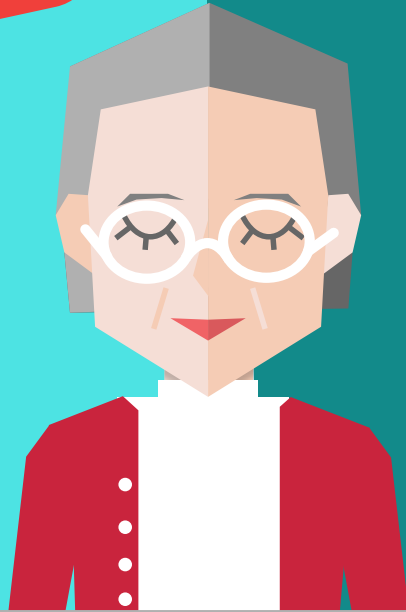


TRANSPORTATION AND HOMECARE SCHEDULING SOFTWARE FOR MANAGED CARE

Did you know that scheduling software can manage both the routing and dispatching of vehicles, as well as event scheduling of home care visits? This infographic shows how to reduce scheduling conflicts and improve overall care.

She needs:

- Adult day care travel to managed care facility
- Home health care and personal care
- On-time arrival at specialist's appointments



Participant
Meet Sarah

She gets:

- Caregiver with appropriate skill level
- Travel to managed care facility and specialist doctors
- Travel and care in one schedule
- A perfect day without scheduling conflicts



She has:

- Her own vehicle
- A busy daily schedule of multiple visits
- Experience and skills as a caregiver



Caregiver
Meet Ann

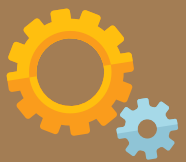
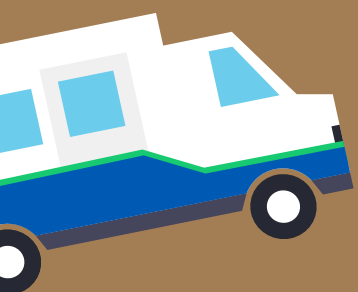
She gets:

- Precise time and location of her home visits
- Knowledge of any changes as they happen during the day
- In-field data collection to reduce paperwork
- Turn-by-turn driving directions
- No scheduling conflicts with transportation



He has:

- His assigned vehicle
- A busy daily schedule of transportation trips
- Experience and skills as a driver



Driver
Meet Bob

He gets:

- Precise time and location of all pickups and drop offs
- Knowledge of any changes as they happen during the day
- In-field data collection to reduce paperwork
- Turn-by-turn driving directions
- No scheduling conflicts with homecare

