

TRIPSPARK'S GENFARE FAREBOX INTEGRATION

Making Life Easier For Drivers and Operators

With a secure and stable connection to Streets, the Genfare Farebox Integration reduces the manual work of drivers while providing agencies with accurate and reliable data for farebox revenue reporting.

AUTOMATED BUS OPERATIONS FOR ENHANCED DRIVER EFFICIENCY

TripSpark's Genfare Farebox Integration automates critical operational tasks, reducing time-consuming manual work for your drivers. Single Sign-On (SSO) through TripSpark's in-vehicle mobile data terminals (MDTs), automatically logs on drivers to the farebox, helping them start their day faster. Since Route, Block and Run information is intelligently and automatically communicated to fareboxes as operators perform their tasks throughout the day, there's no longer the need for constant manual updates.

WIDELY ADOPTED SOLUTION WITH PROVEN RELIABILITY

One of the standout features of the Genfare Farebox Integration is its proven reliability. Used by a majority of TripSpark's Streets customers, you can rest assured that you are investing in a tried-and-tested integration that aligns with industry standards and best practices.

📍 IMMEDIATE RETURN ON YOUR INVESTMENT

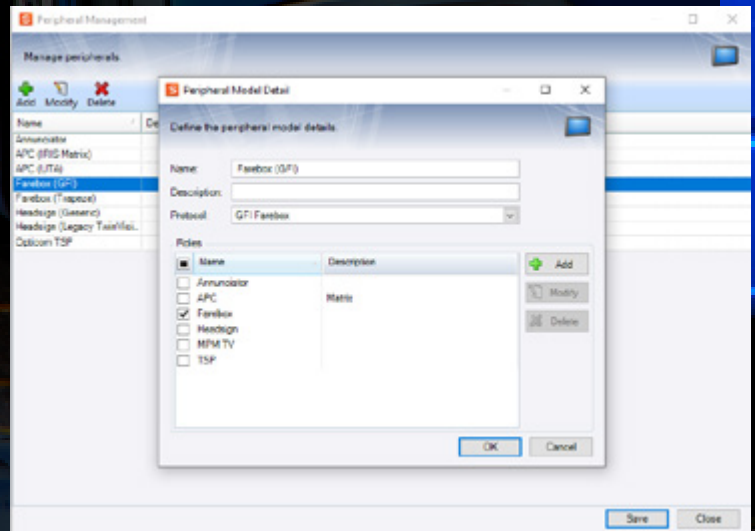
TripSpark's Genfare Farebox Integration offers a low-cost, high-impact solution with an immediate return on investment because:

- System administrators will no longer need to manually update or change Genfare data due to operator oversights.
- Operators can bid farewell to the time-consuming task of updating Route and Run information on fareboxes.
- Farebox revenue reports become accurate and reliable, free from missing key data or inaccuracies caused by human error.

📍 SEAMLESS INTEGRATION WITH MDTs

The integration seamlessly extends to TripSpark's MDTs – Rangers and myDrive – where automatic logon of the farebox is triggered when the driver logs on to the MDT. Genfare Integration with MDTs ensures that when operators are logged on and on assignment, the system automates key processes so they can focus on their core responsibilities.

With this integration, drivers can prioritize on-time performance and providing riders with a safe journey because GPS, time and driver information are automatically shared with GenFare fareboxes. This flow of information enriches reporting data available through the Genfare back office reporting tool.





📍 SCALABLE AND CUSTOMIZABLE

The Genfare Farebox Integration is not a one-size-fits-all solution; it caters to the unique needs of different transit systems.

With support for both Odyssey and FastFare Genfare fareboxes, the integration is versatile and adaptable to the evolving needs of agencies. This scalability ensures that transit agencies of varying sizes and requirements can benefit from the automated efficiency and accuracy provided by TripSpark's Streets back-office solution.

📍 GAIN VALUABLE CUSTOMER INSIGHTS

Data shared by the GenFare fareboxes with the back-office system, such as fare category, payment type, location of the issued fare often provides valuable insights about customers. Accurate farebox data can help agencies make better decisions about fare policies, as well as understand travel and ridership trends to offer their customers safe and satisfying journeys.

TripSpark's Genfare Farebox Integration is a simple yet effective solution to drive forward operational efficiencies for your agency. Transit agencies striving to improve on-time performance and customer experience will get closer to achieving their mission by implementing the Genfare Farebox integration.

MOVING >> << TOGETHER

TripSpark is a people transportation technology company helping increase service and access to transportation, improve rider satisfaction, drive revenue, and overcome operational challenges. Our solution suites include fixed route, rideshare, NEMT, and on-demand (paratransit, demand response, microtransit). We are not just a vendor—we are your long-term strategic partner, offering the latest technologies and providing exceptional support.

🌐 www.tripspark.com | ✉ info@tripspark.com

©TripSpark Technologies, its subsidiaries and affiliates. All rights reserved.
Any trademarks or registered trademarks mentioned herein are the property of their respective owners.

