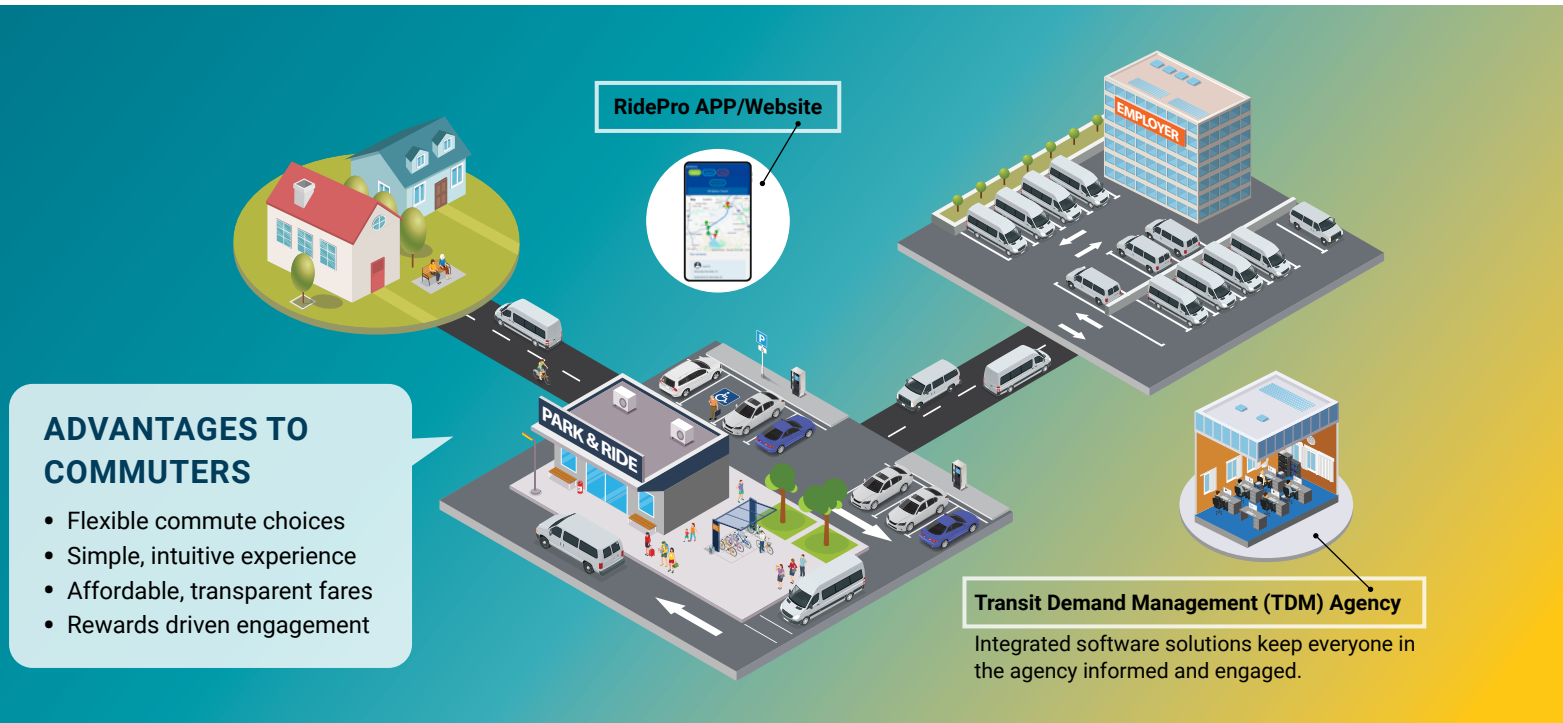


RidePro – PLATFORM

TripSpark's ridesharing software, RidePro, offers essential tools to meet the needs of regional commuters. It is designed for organizations that provide ride-matching, vanpooling, and multi-modal transportation solutions. RidePro is a comprehensive technology platform built to manage commuter programs, generate reports, support sustainability efforts, and help reduce traffic congestion.



ADVANTAGES TO EMPLOYERS

Actionable insight into commute programs

Employers can track commuter participation, analyze trends, and understand program performance using built-in reporting and data tools

Support for flexible and hybrid workforces

RidePro accommodates evolving commute patterns, including part-time, shift-based, and non-traditional travel needs, making it easier to support today's workforce

Improved engagement and retention

Incentives, challenges, and flexible fare options help employers encourage sustainable commute behaviours while providing tangible value to employees

Simplified program management

Tools for communication, promotions, and reporting reduce administrative effort while supporting employer-sponsored or agency-led initiatives

ADVANTAGES TO AGENCIES

Complete multi-modal demand management

RidePro supports ride matching, vanpooling, trip logging, incentives, marketing, and reporting within a single platform, enabling end-to-end program management

Operational efficiency and staff productivity

Automated and batch matching, intuitive workflows, and built-in communications tools help agencies increase efficiency and return more matches with less manual effort

Robust reporting and program audit support

Extensive stakeholder, operational, environmental, and program reports, along with submission-ready NTD reports, support transparency, performance measurement, and funding requirements

Scalable, secure, and future-focused platform

RidePro is hosted in a secure, resilient environment and benefits from ongoing roadmap investment, key feature additions, and continuous security enhancements